

ISOMETRIC VIEW

NOTES:

1. INSTALLATION SHALL COMPLY WITH ALL APPLICABLE NATIONAL AND LOCAL ELECTRICAL REGULATIONS.
2. REFER TO PRODUCT MANUALS FOR ADDITIONAL DETAILS PRIOR TO INSTALLATION AND SITE PREPARATION WORK.

THIS DRAWING AND SPECIFICATIONS HEREIN ARE THE PROPERTY OF SCHNEIDER ELECTRIC AND SHALL NOT BE COPIED, REPRODUCED OR USED IN WHOLE OR IN PART, AS THE BASIS FOR THE MANUFACTURE OR SALE OF ITEMS WITHOUT WRITTEN PERMISSION FROM SCHNEIDER ELECTRIC. THIS DRAWING IS BASED UPON LATEST AVAILABLE INFORMATION AND IS SUBJECT TO CHANGE WITHOUT NOTICE.



TITLE: APC Easy UPS On-Line SRV  
(3000VA/2700W, WITH INTERNAL BATTERY)  
INPUT: 230VAC (L+N+G), 40-70Hz  
OUTPUT: 230VAC (L+N+G), 50/60Hz  
ISOMETRIC VIEWS

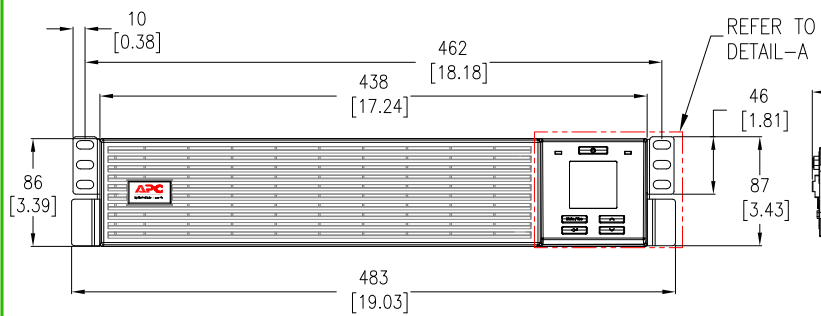
PROJECT: SUBMITTAL DRAWING SHEET 1 OF 3

DWG NO: SRV3KRI-E

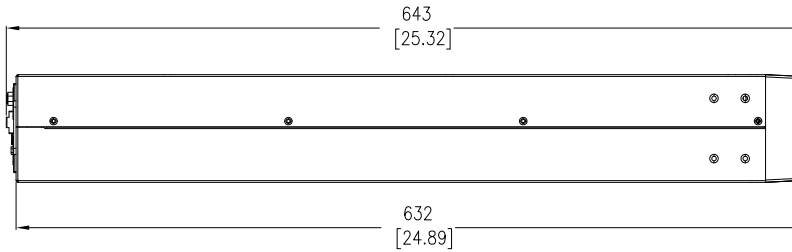
DRAWN:	RANJITHA	24-SEP-21
ENGINEER:	ASHOK	27-SEP-21
APPROVED:	M LIPARE	27-SEP-21

REV. 0

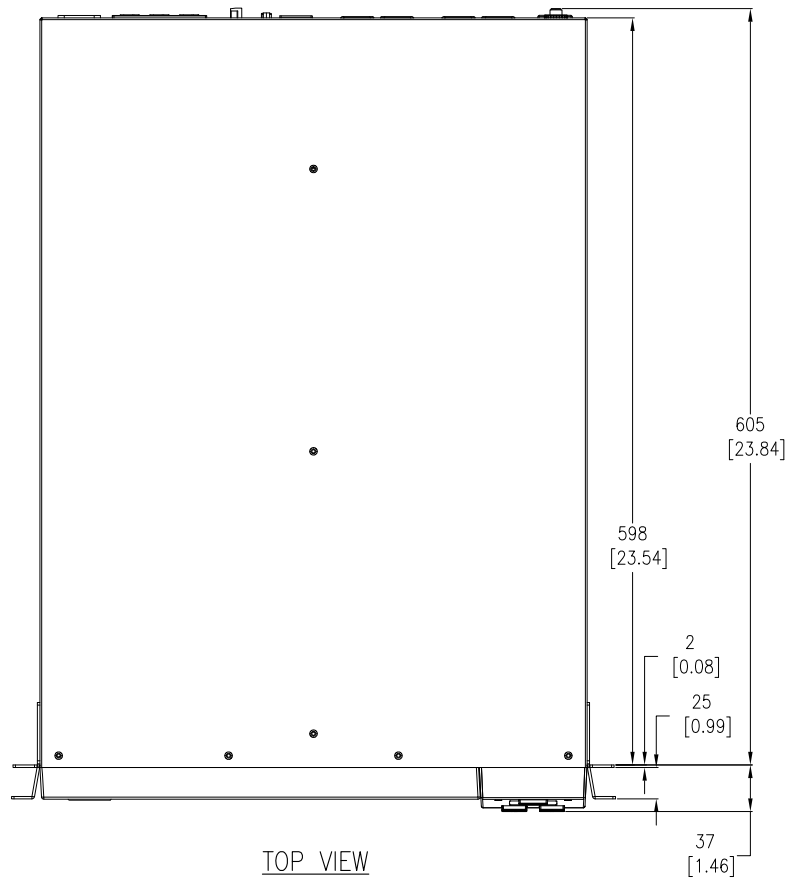
FIRST  
ANGLE  
PROJECTION



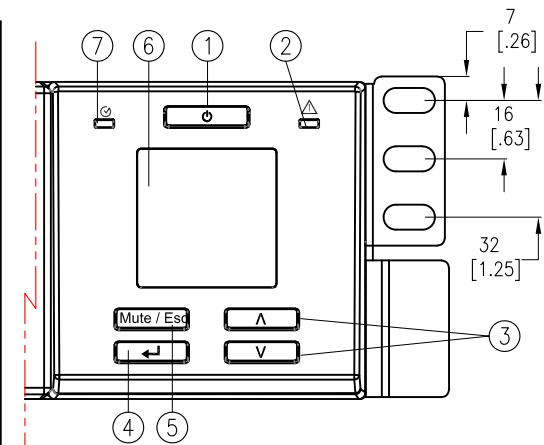
FRONT VIEW



SIDE VIEW

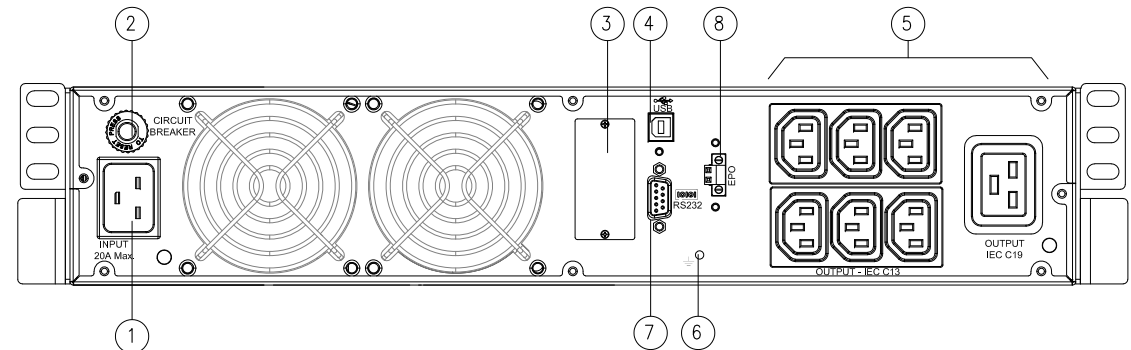


TOP VIEW



DETAIL-A, DISPLAY PANEL  
(ENLARGED VIEW)

1. Power ON/OFF button.
2. Alert LED
3. UP/DOWN arrow buttons.
4. ENTER button.
5. Mute/ESC button.
6. LCD Display.
7. Status LED



REAR VIEW (ENLARGED)

- ① IEC C20 AC INPUT SOCKET
- ② INPUT CIRCUIT BREAKER
- ③ INTELLIGENT CARD SLOT
- ④ USB COMMUNICATION PORT
- ⑤ IEC C13 (x6) & C19 (x1) OUTPUT SOCKET
- ⑥ GROUND SCREW
- ⑦ RS-232 SERIAL PORT
- ⑧ EMERGENCY POWER OFF (EPO)

NOTES:

1. INSTALLATION SHALL COMPLY WITH ALL APPLICABLE NATIONAL AND LOCAL ELECTRICAL REGULATIONS.
2. REFER TO PRODUCT MANUALS FOR ADDITIONAL DETAILS PRIOR TO INSTALLATION AND SITE PREPARATION WORK.
3. ALL DIMENSIONS ARE IN MILLIMETERS [INCHES]
4. CABLE ENTRY/EXIT IS FROM REAR SIDE OF UNIT.
5. NET WEIGHT OF THE UNIT IS 28.5 kg (62.83 lbs) .

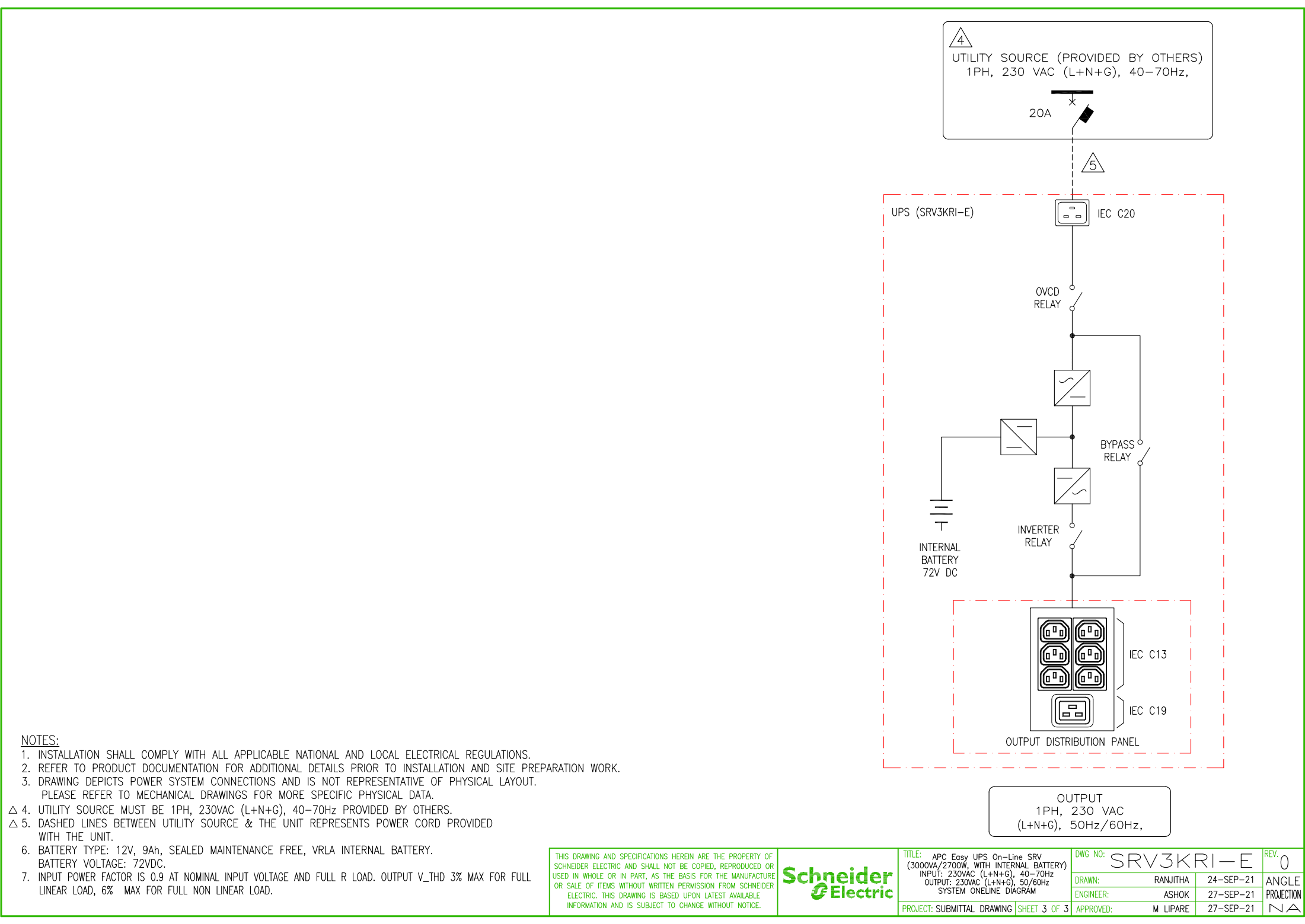
THIS DRAWING AND SPECIFICATIONS HEREIN ARE THE PROPERTY OF SCHNEIDER ELECTRIC AND SHALL NOT BE COPIED, REPRODUCED OR USED IN WHOLE OR IN PART, AS THE BASIS FOR THE MANUFACTURE OR SALE OF ITEMS WITHOUT WRITTEN PERMISSION FROM SCHNEIDER ELECTRIC. THIS DRAWING IS BASED UPON LATEST AVAILABLE INFORMATION AND IS SUBJECT TO CHANGE WITHOUT NOTICE.

**Schneider Electric**

TITLE: APC Easy UPS On-Line SRV  
(3000VA/2700W, WITH INTERNAL BATTERY)  
INPUT: 230VAC (L+N+G), 40-70Hz  
OUTPUT: 230VAC (L+N+G), 50/60Hz  
GENERAL ARRANGEMENT

PROJECT: SUBMITTAL DRAWING SHEET 2 OF 3

DWG NO:	SRV3KRI-E	REV:	0
DRAWN:	RANJITHA	24-SEP-21	FIRST
ENGINEER:	ASHOK	27-SEP-21	ANGLE
APPROVED:	M LIPARE	27-SEP-21	PROJECTION



NOTES:

1. INSTALLATION SHALL COMPLY WITH ALL APPLICABLE NATIONAL AND LOCAL ELECTRICAL REGULATIONS.
2. REFER TO PRODUCT DOCUMENTATION FOR ADDITIONAL DETAILS PRIOR TO INSTALLATION AND SITE PREPARATION WORK.
3. DRAWING DEPICTS POWER SYSTEM CONNECTIONS AND IS NOT REPRESENTATIVE OF PHYSICAL LAYOUT. PLEASE REFER TO MECHANICAL DRAWINGS FOR MORE SPECIFIC PHYSICAL DATA.
- △ 4. UTILITY SOURCE MUST BE 1PH, 230VAC (L+N+G), 40-70Hz PROVIDED BY OTHERS.
- △ 5. DASHED LINES BETWEEN UTILITY SOURCE & THE UNIT REPRESENTS POWER CORD PROVIDED WITH THE UNIT.
6. BATTERY TYPE: 12V, 9Ah, SEALED MAINTENANCE FREE, VRLA INTERNAL BATTERY. BATTERY VOLTAGE: 72VDC.
7. INPUT POWER FACTOR IS 0.9 AT NOMINAL INPUT VOLTAGE AND FULL R LOAD. OUTPUT V<sub>THD</sub> 3% MAX FOR FULL LINEAR LOAD, 6% MAX FOR FULL NON LINEAR LOAD.

THIS DRAWING AND SPECIFICATIONS HEREIN ARE THE PROPERTY OF SCHNEIDER ELECTRIC AND SHALL NOT BE COPIED, REPRODUCED OR USED IN WHOLE OR IN PART, AS THE BASIS FOR THE MANUFACTURE OR SALE OF ITEMS WITHOUT WRITTEN PERMISSION FROM SCHNEIDER ELECTRIC. THIS DRAWING IS BASED UPON LATEST AVAILABLE INFORMATION AND IS SUBJECT TO CHANGE WITHOUT NOTICE.



TITLE: APC Easy UPS On-Line SRV (3000VA/2700W, WITH INTERNAL BATTERY)  
INPUT: 230VAC (L+N+G), 40-70Hz  
OUTPUT: 230VAC (L+N+G), 50/60Hz  
SYSTEM ONLINE DIAGRAM

PROJECT: SUBMITTAL DRAWING SHEET 3 OF 3

DWG NO: SRV3KRI-E

DRAWN:	RANJITHA	24-SEP-21
ENGINEER:	ASHOK	27-SEP-21
APPROVED:	M LIPARE	27-SEP-21

REV. 0

ANGLE PROJECTION  
N